

# Zoning Validation and Restrictions – Restricting Knuckle Lots

Layer(s) involved: ap-prodx, ap-restrictions

Ideally, the choice of whether or not to restrict lots located around knuckles should take place during the conceptual design in order to compensate for the extra block depth required when not restricting knuckle lots. If the planner has not accounted for the additional depth in the design, and you choose to not restrict knuckle lots, the potential is to lose lots if sufficient open space does not exist to absorb the additional depth. In Figure KN1 you can see that lot 48 was created at the minimum depth of 115', leaving lot 49 with a 5' restriction in the rear and reducing the building envelope depth from 77' to 72'. By contrast, you will notice that in Figure KN2 lot 48 has an addition 5' of depth in order to allow for full depth of lot 49, which is positioned on a knuckle. Complete Layout form CL4 allows you to select whether blocks containing knuckles are created with additional depth in order to not restrict lot rears around knuckles.

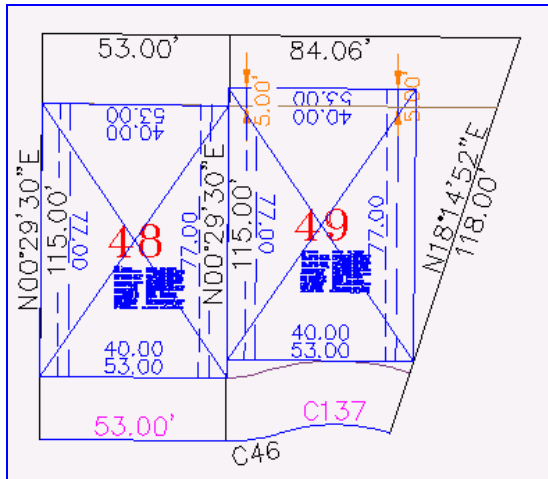


Figure KN1  
Restricting Knuckle Lots

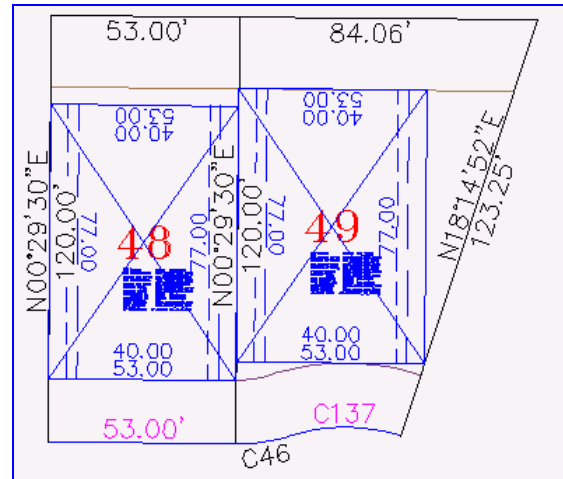


Figure KN2  
Not Restricting Knuckle Lots